

MONTHLY MEMBERSHIP PROGRESS REPORT

District 21 N

Results as of: 5/31/2024

GMT:

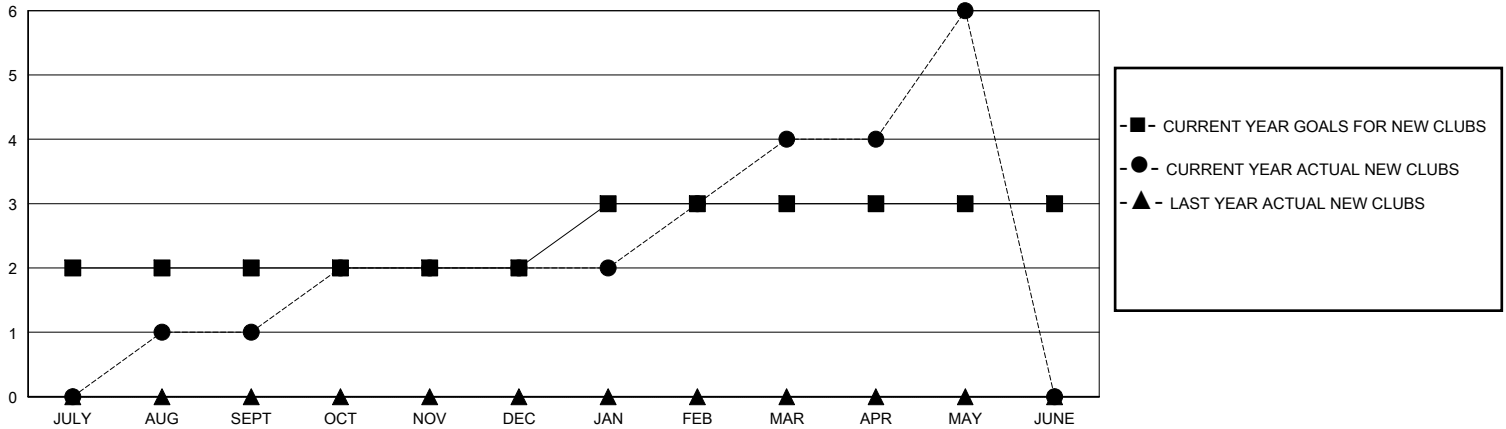
LOCATION ARIZONA

GMT CA

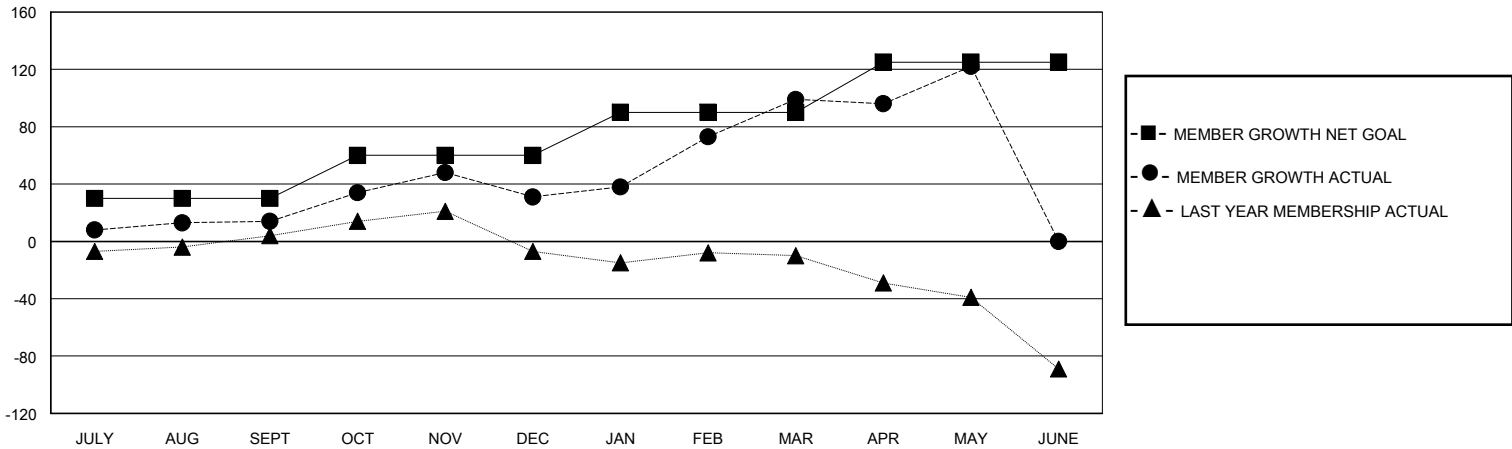
Clubs			
RESULTS FOR 2023-2024			
QUARTER	NEW CLUB GOAL	NEW CLUBS	DROPPED CLUBS
JULY/AUG/SEPT	2	1	0
OCT/NOV/DEC	0	1	0
JAN/FEB/MAR	1	2	0
APR/MAY/JUNE	0	2	1

Members			
RESULTS FOR 2023-2024			
QUARTER	MEMBER GROWTH NET GOAL	MEMBER GROWTH ACTUAL	DROPPED MEMBERS ACTUAL (including transfers)
JULY/AUG/SEPT	30	93	68
OCT/NOV/DEC	30	63	42
JAN/FEB/MAR	30	95	23
APR/MAY/JUNE	35	103	53

GOALS AND ACTUAL NEW CLUBS CUMULATIVE



GOALS AND ACTUAL MEMBERS CUMULATIVE



DROPPED CLUBS: 1	43 CLUBS OF 60 ADDED 1 OR MORE NEW MEMBERS	GENDER DISTRIBUTION MALE 754 (51.71%) FEMALE 704 (48.29%)
DROPPED MEMBERS DECEASED 25 CLUB CANCELLED 0 OTHER 161 TOTAL 186	CLICK HERE FOR CUMULATIVE MEMBERSHIP DATA	TOTAL FAMILY UNIT MEMBERS 386 FAMILY MEMBERS PAYING HALF DUES 212